



JUNIOR GOLF ACADEMY PROGRAM

 | golfzonleadbetter.com

 | inquiries@golfzonleadbetter.com

 | 7450 Sparkling Ct,
Reunion, FL 34747

Index

3	LETTER FROM DAVID LEADBETTER	9	FACILITY FEATURES
4	MISSION AND VALUES	10	IMAGE GALLERY
5	WHY CHOOSE THE PROGRAM?	11	HOUSING
6	A DAY IN THE LIFE	12	EDUCATION
7	DAILY SCHEDULE	13-14	MEET THE TEAM
8	MAP OF FACILITIES	15	FAQs

A MESSAGE FROM DAVID LEADBETTER

Throughout my years of teaching, I've had the opportunity to work with players of all ages, but helping juniors to be their best has always been uniquely rewarding.

In 1992, the Leadbetter Junior Golf Academy was born, attracting young players from all over the world whether college or professional golf was their aim. Many world-class players came out of the program, including the likes of Paula Creamer, Jessica Korda, Nelly Korda, Julieta Granada, Sean O'Hair, Chen Tsung Pan, and Emiliano Grillo. In fact, many of today's junior golf academies took direct inspiration from our original model, with a vast number of the world's top junior golf coaches graduating through the Leadbetter Instructor certification program.

By reason of popular demand and my desire to once again revolutionize the junior golf program space, I was excited to officially launch the GOLFZON Leadbetter Junior Golf Academy Headquarters in Orlando, Florida at our state-of-the-art facility in the Summer of 2017. With our 20 years of experience training Juniors, my team and I have designed a holistic program to guarantee that young players reach their full potential in golf as in life.

The Leadbetter name has been synonymous with instructional excellence for more than three decades. We have helped professionals win dozens of PGA and LPGA tournaments, including 25 major championships, and helped thousands of amateurs enjoy the game.

We have always focused the bulk of our attention on helping young golfers to achieve their dreams. We look forward to utilizing our unparalleled knowledge and expertise to help your child do the same.

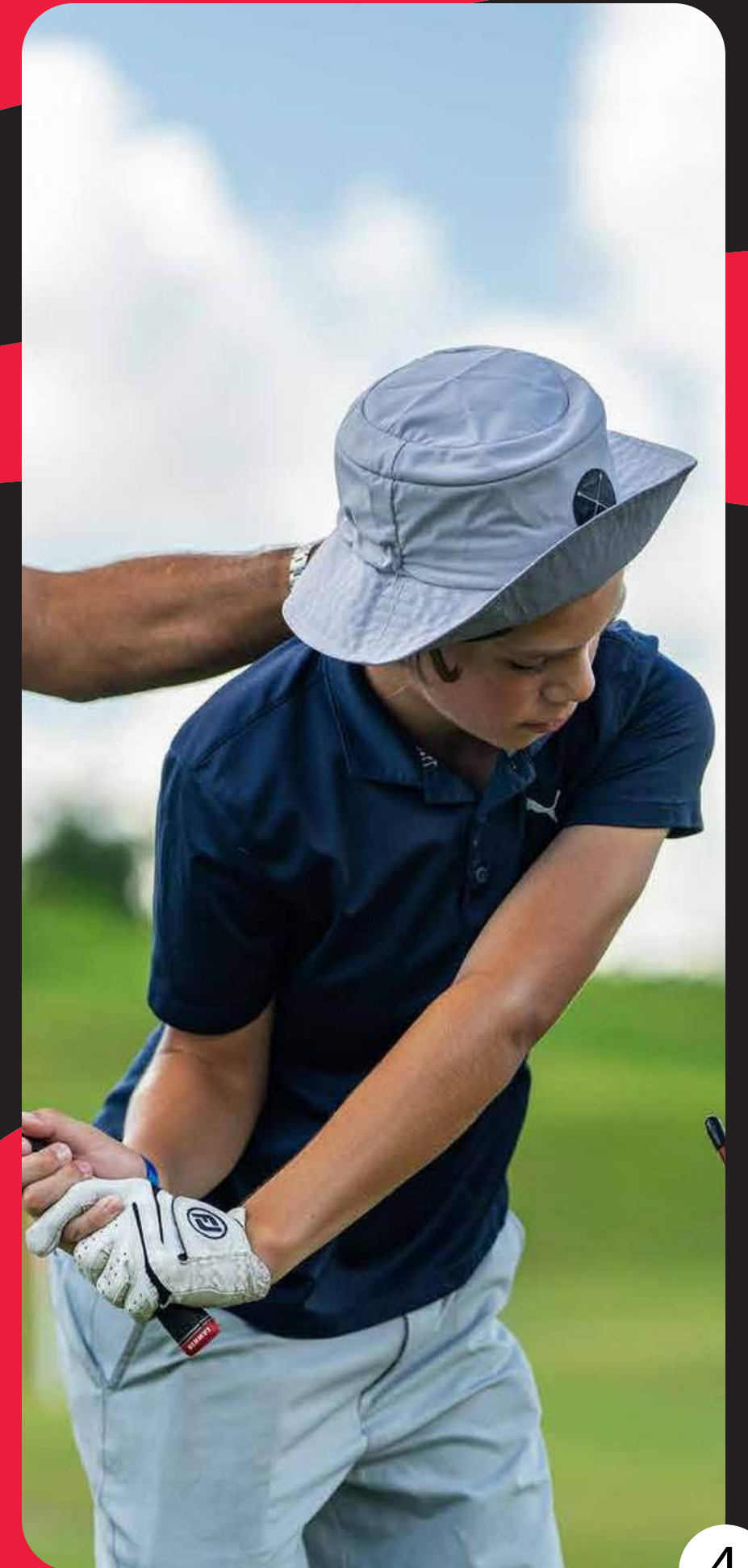
David Leadbetter





MISSION & VALUES

- **LEARN FROM EXPERIENCE**
Every day we strive for improvement, as golfers and as individuals.
- **DEDICATED TO GOLF**
No detail is too small for us to consider its impact on golf performance.
- **STRIVE FOR SIMPLICITY**
Our simple philosophy makes the game easier to understand and faster to learn.





WHY CHOOSE THE JUNIOR PROGRAM?

GOLFZON Leadbetter's Junior Golf Academy program (GLA) provides the most individualized full-time junior golf program available in the world. Located at GOLFZON Leadbetter's global headquarters in Orlando, Florida, every detail has been meticulously designed to deliver the perfect environment for personal development.

Our team of instructors, personally trained by David Leadbetter and his vast coaching knowledge, is involved with each student to provide the very highest level of coaching.

GLA has partnered with the leading premium school in Orlando, Winderemere Preparatory School, to deliver award-winning education, international exposure and first-class accomodation in a nurturing environment.

The comprehensive long-term and short-term programs offered by GLA cater to every need of the student both on and off the course and are structured with a single aim - to create high quality golfers.

- Zach Parker,
Junior Academy Director and Coach





A DAY IN THE LIFE

Every student attending GLA will undergo a full week of screening and assessments to allow David and his team of coaches to create a personal development plan and complete short and long-term goal setting. Regular reports will be generated to track progress and keep parents and college recruiters involved.

GLA will offer instruction and monitored practice each week, combining individual technical instruction plus group training, on-course play, tournament preparation, mental coaching, and a personal fitness program. GLA coaches will coordinate and accompany students to the top junior tournaments, as well as arrange college visits and placements.

A typical day will consist of golf instruction in the morning at the academy, followed by online school in the afternoon. In keeping with David's holistic approach, every session will begin with a dynamic warmup before students begin either individual instruction or group training. Students will spend several hours on-course each week playing and simulating tournament situations on the three golf courses available at Reunion Resort and Golf Club.

GLA has a dedicated sports psychologist, a mental performance coach, and fitness and biomechanics performance experts who offer regular assessments and support. David will provide his personal input and coaching to each student during the program.

In addition to holistic golf instruction, GLA will provide regular 'life skills' sessions with guest speakers that include professional tour players, college recruiters, sports performance experts, business professionals, and more.

At the end of each week, coaches will prep students for tournament preparation, including strategy sessions and equipment checks. In the evenings and spare time, students will be encouraged to maintain a balanced life with team outings to local PGA Tour and LPGA Tour events, visits to Orlando's famous theme parks, and to pools and leisure facilities at Reunion Resort.



DAILY SCHEDULE

5:30AM - 6:30AM

FITNESS TRAINING

7:30AM - 12:45PM

CLASSES AT WINDERMERE PREP SCHOOL

12:45PM - 1:30PM

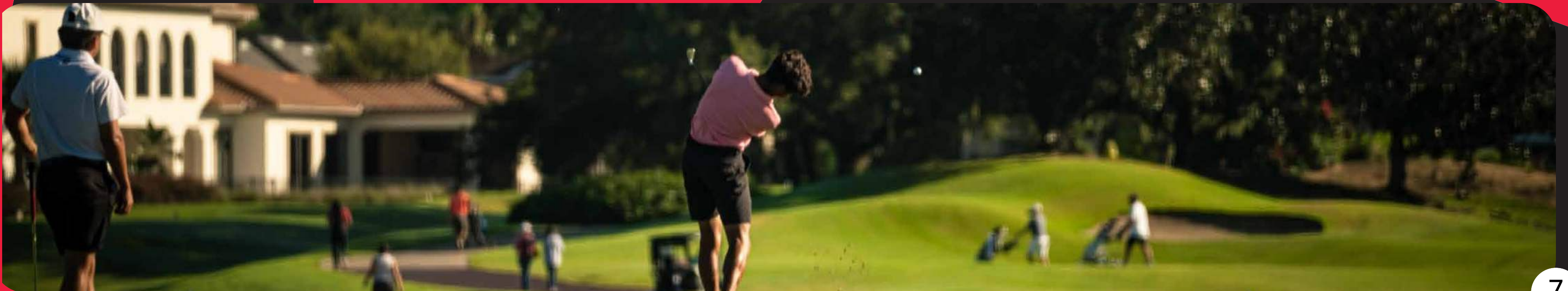
LUNCH AT WPS

1:30PM - 2:00PM

TRAVEL BACK TO ACADEMY

2:00PM - 6:00 PM

GOLF PRACTICE & TRAINING



MAP OF FACILITIES

1 Academy

- Swing Lab
- Fitting Studio
- PuttView Training Lab
- Fitness & Performance Area
- GOLFZON simulator
- Video analysis rooms
- Indoor/Outdoor Hitting Bays

2 Putting Greens

- Academy green
- Reunion resort greens

3 Academy Driving Range

- 350 yards
- 4 Tee boxes
- Wedge range targets

4 Short Game Areas

- Multiple greens & bunkers

5 Main Student Housing/Dining

- Dining area
- 5 Bedroom villa
- Housing office

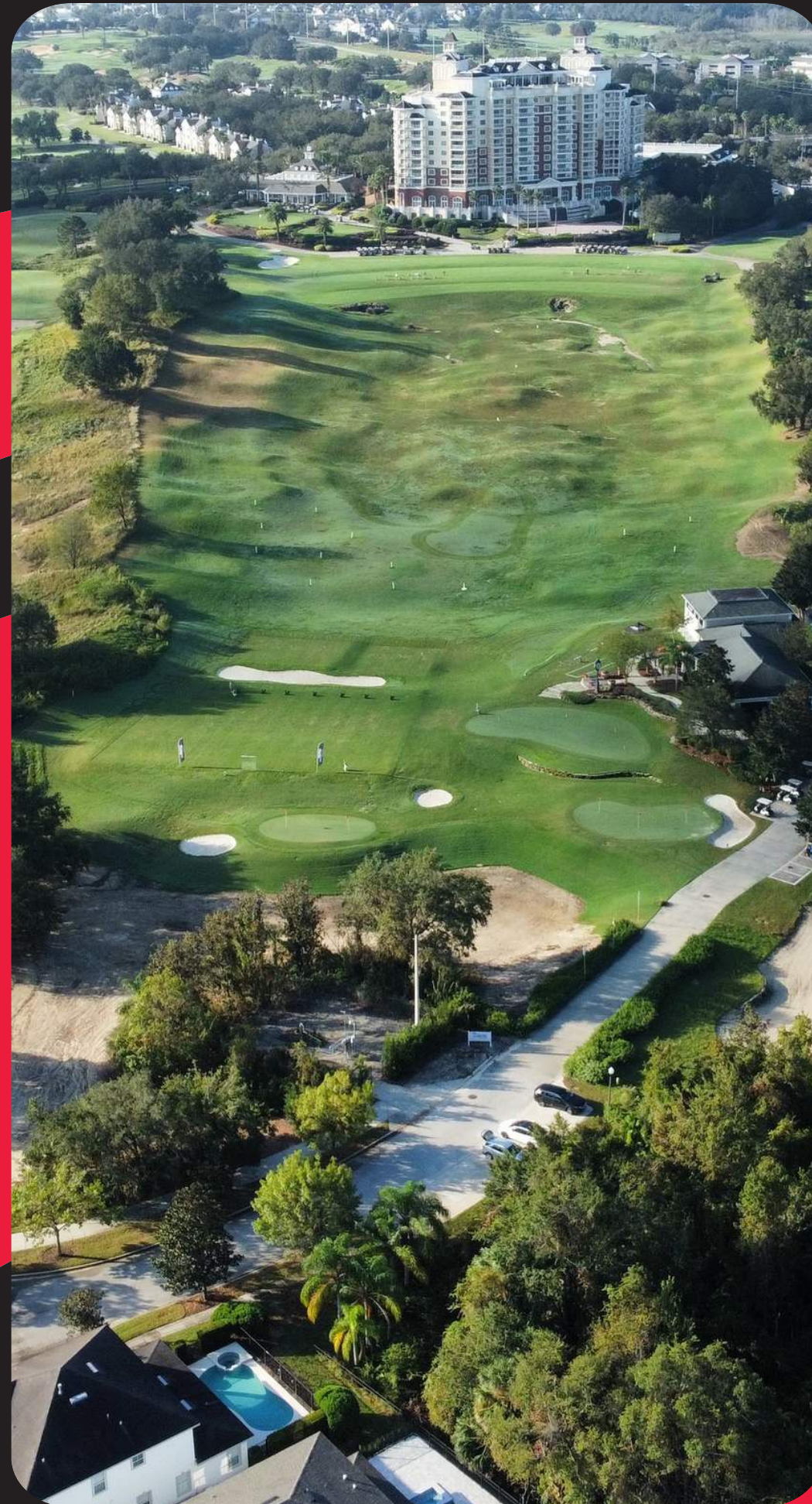
6 Student Accomodations

- 2:1 bedroom ratio
- Live-in house parent 24/7
- Study and common areas
- Transportation provided



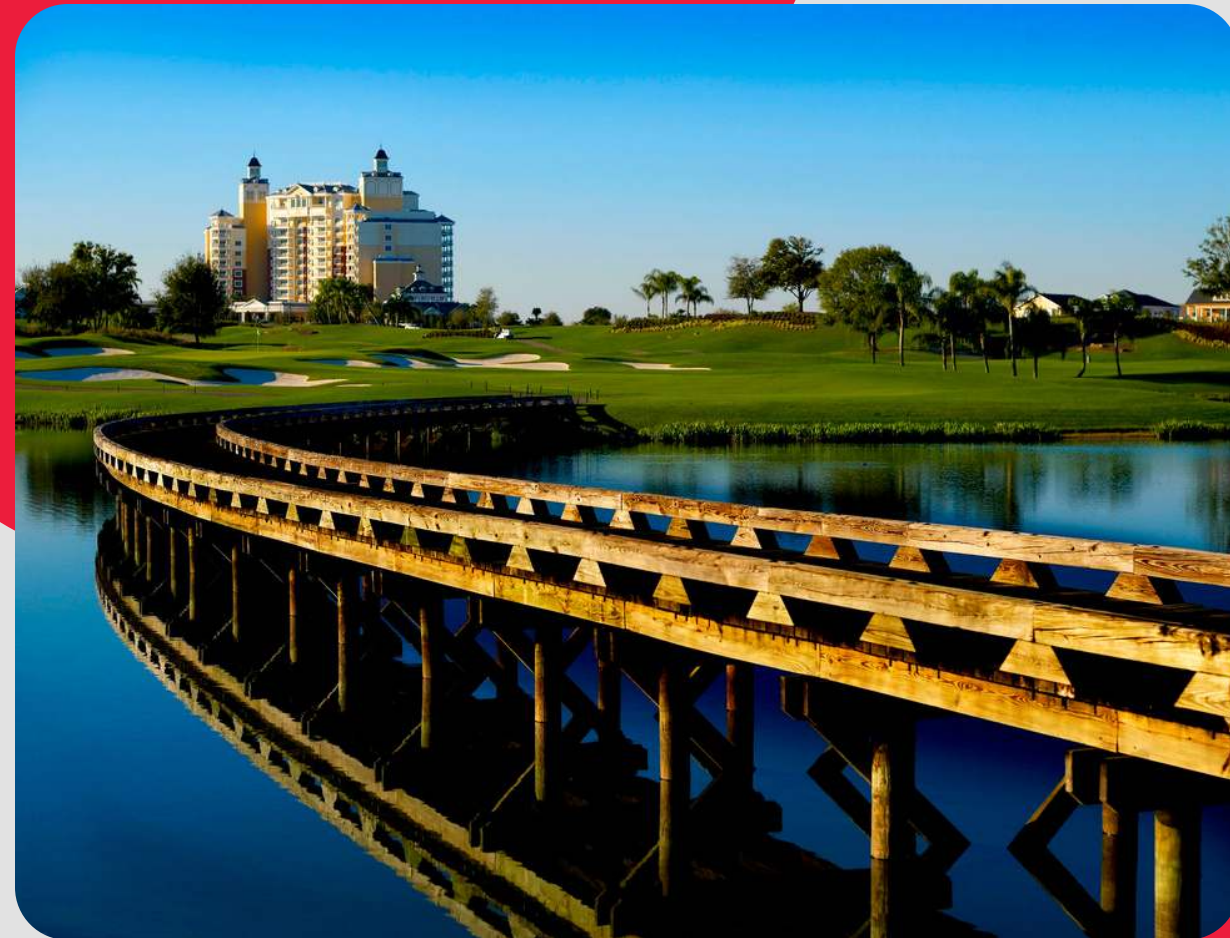
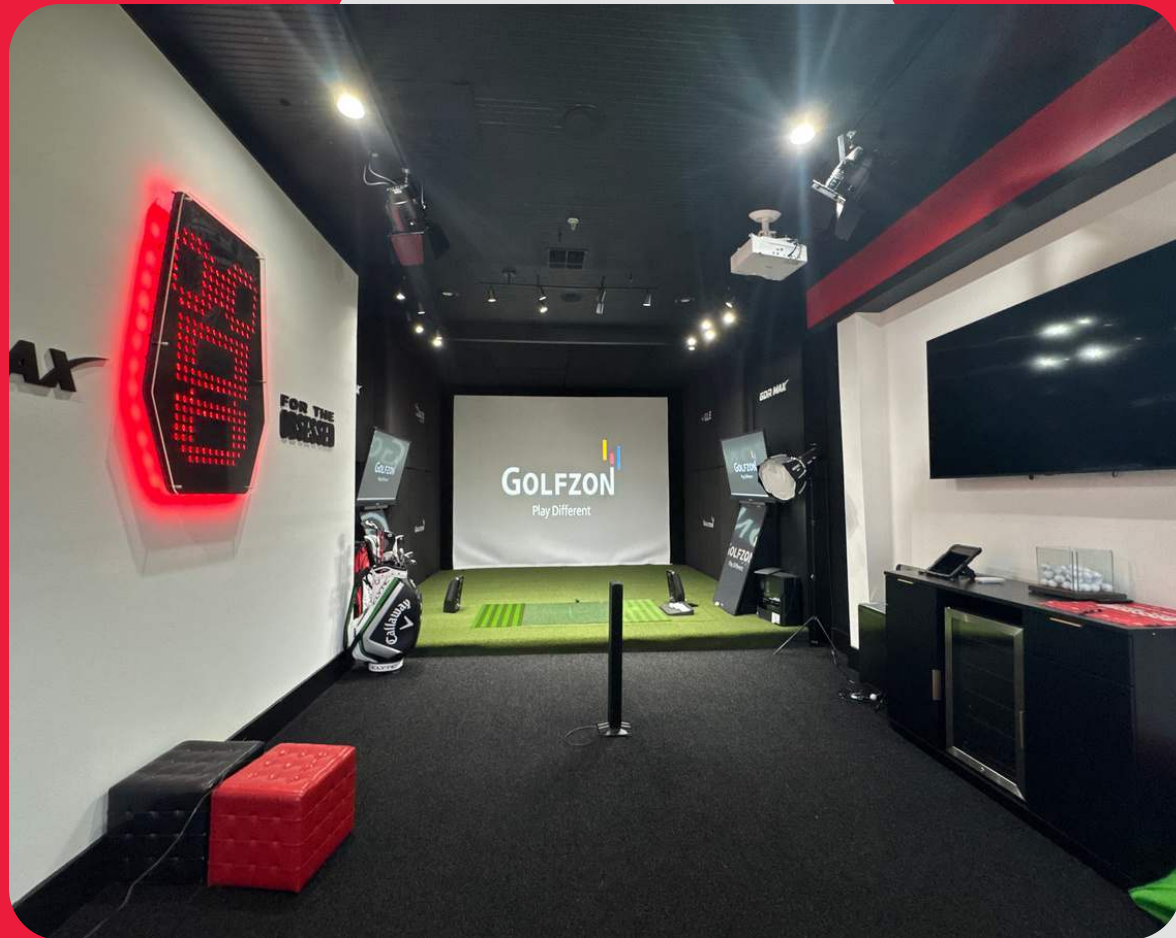
OUTDOOR FACILITIES

- Private Academy driving range
- Two putting greens
- Two chipping greens
- Training equipment and swing aids
- 100-yard wedge training area with target bunkers
- Three signature Reunion Resort golf courses from PGA legends Jack Nicklaus, Arnold Palmer and Tom Watson



INDOOR FACILITIES

- GOLFZON GDR MAX simulator training room
- Club Champion fitting & repairs
- Video analysis rooms
- Renovated gym and fitness studio
- Putting Studio with Puttview, GEARS and Quintic technology
- Biomechanics and golf performance studio
- Sportsbox, Trackman, Rapsodo, InRange and Gears Putting shot tracking systems

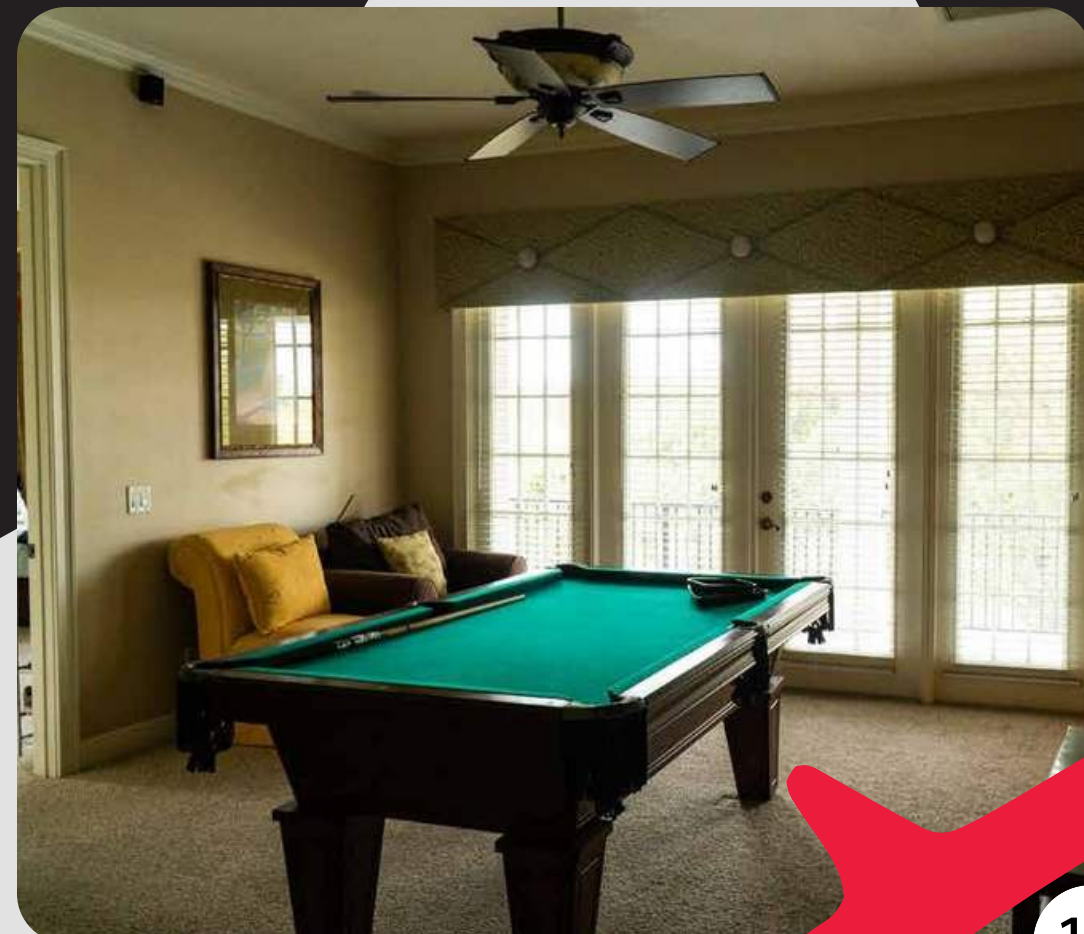


HOUSING

Boarding students will live in luxury townhouses in a gated community featuring a private pool, gym, and clubhouse. Each of the spacious, furnished houses is gender-specific and located within walking distance of the Academy and golf courses.

Students have access to common areas, study spaces, laundry, and kitchen areas. We provide a safe boarding environment to make the academy feel like home.

Houses are under the care of full-time house parents to ensure health, safety, and happiness of students. They will monitor behavior and create community. House parents work closely with parents and coaches to ensure students are comfortable and engaged in all areas of living.





EDUCATION

GLA students will attend Windermere Preparatory School, located in southwest Orange County, just 19 miles north of the Academy. Their academic approach is built on complex problem solving and critical thinking emphasizes intellectual, personal, emotional and social growth, culminating with the International Baccalaureate (IB) Diploma Program.

Windermere Preparatory School wants your child to learn from the best, which is why they recruit, retain and develop outstanding teachers. The school also offers enhanced learning through collaborations with world-leading organizations such as the Massachusetts Institute of Technology (MIT) and The Julliard School.

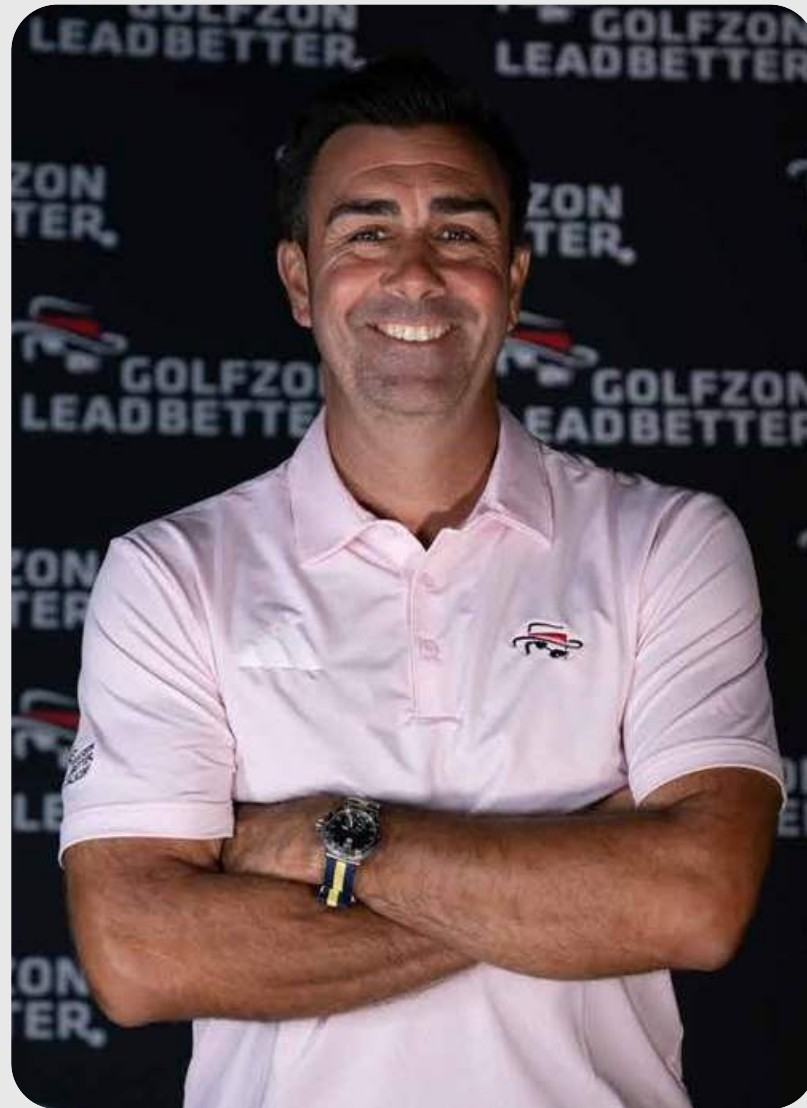
The global campus extends learning beyond the classroom through unique challenge and activities. It connects students around the world to learn together every day, broadening their knowledge and nurturing transferable skills to support their success in school and later in life.

While academic achievement is Windermere Preparatory School's highest priority, it is complemented and enriched by a multitude of resources and extracurricular activities, such as fine and performing arts, athletics, clubs and community service

Through personalized learning and cutting-edge curriculum, committed teachers provide instruction that develops and educates the whole child, both inside and outside the classroom.

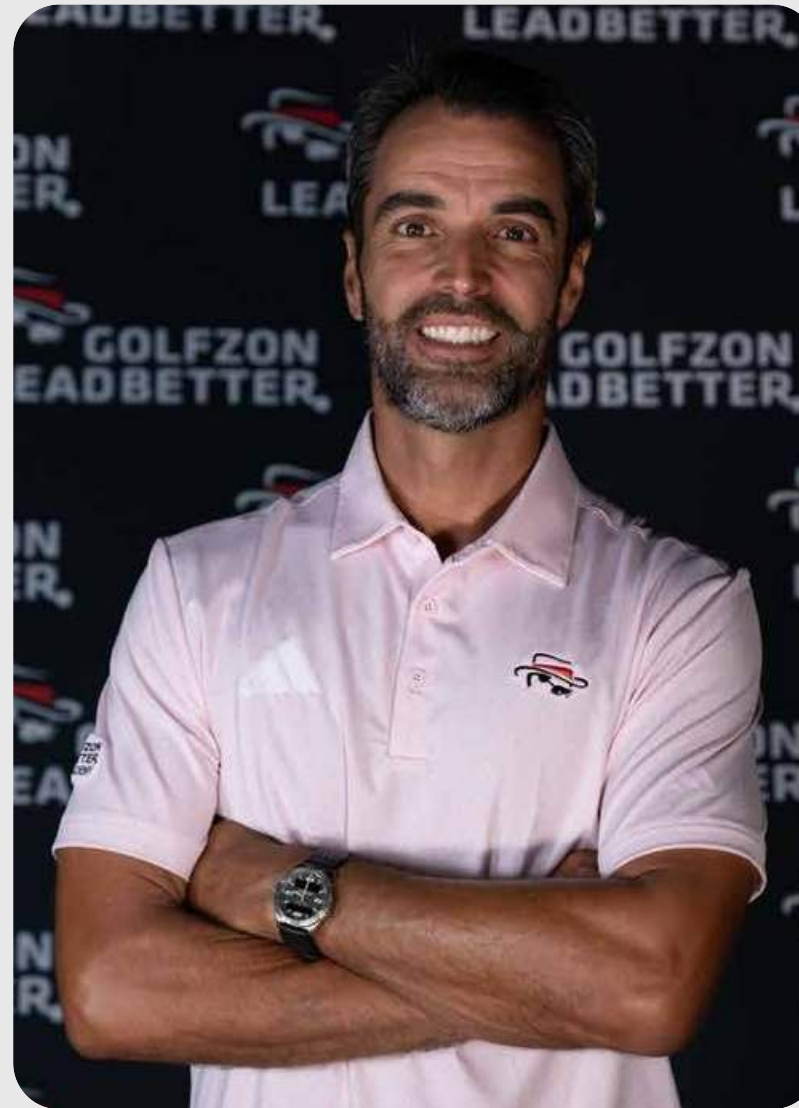


MEET THE TEAM



Zach Parker

Junior Academy Director



Chema Sanchéz

Director of GLA HQ



Holly Clyburn

GLE Certified Coach &
European LPGA Tour
Professional

MEET THE TEAM



Laurence Brotheridge

Senior GLE Certified Instructor



Nate Dougherty

GLE Certified Coach
& Biomechanics Specialist



FAQs

- **WHEN DOES THE ACADEMY PROGRAM BEGIN?**

The fall semester will run from August - December, and the spring semester from January - May, with specific dates to come.

- **WHAT IS THE LENGTH OF THE PROGRAM?**

Each semester lasts roughly 4 months each. Students are invited to attend summer and winter camps and take lessons during breaks to extend their time.

- **DOES MY CHILD HAVE TO ENROLL BY THE START DATE?**

We understand if your child is unable to make it on the exact semester start date due to family or golf obligations but please let us know in advance. Once a part of the program, student must stay until the semester ends.

- **DO YOU HELP WITH COLLEGE PLACEMENTS?**

Yes! Our coaching team is here to help support the next steps for our junior golfers in selecting a university or college to further their game during recruitment periods.

- **DOES MY CHILD NEED TO BOARD?**

We offer both boarding and non-boarding options to cater to local students, as well as those outside of the area to live and train at the academy.



GOLFZON LEADBETTER.

 | golfzonleadbetter.com

 | inquiries@golfzonleadbetter.com

 | 7450 Sparkling Ct,
Reunion, FL 34747